



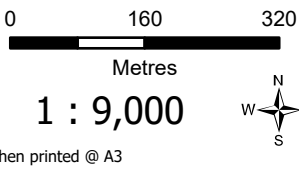
Fadden

CFU Training and
Recruitment Area

LEGEND

- CFU Operational Area
- CFU Training and Recruitment Area
- Suburb boundaries

SCALE



PRODUCTION INFORMATION

Map Produced by ESA Geospatial Intelligence
Map Projection: GDA 1994 MGA Zone 55
Date & Time Printed: 25/06/2025 08:51hrs
Basemap credits: MetroMap

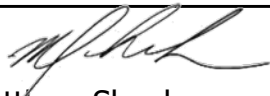
WARNING INFORMATION

Data Supplied by various stakeholders under ANZLIC* Guidelines.

The information contained herein has been provided in good faith. Effort has been made to ensure its accuracy and completeness.

The Stakeholders take no responsibility for errors or omission nor any loss or damage that may result from the use of this information.

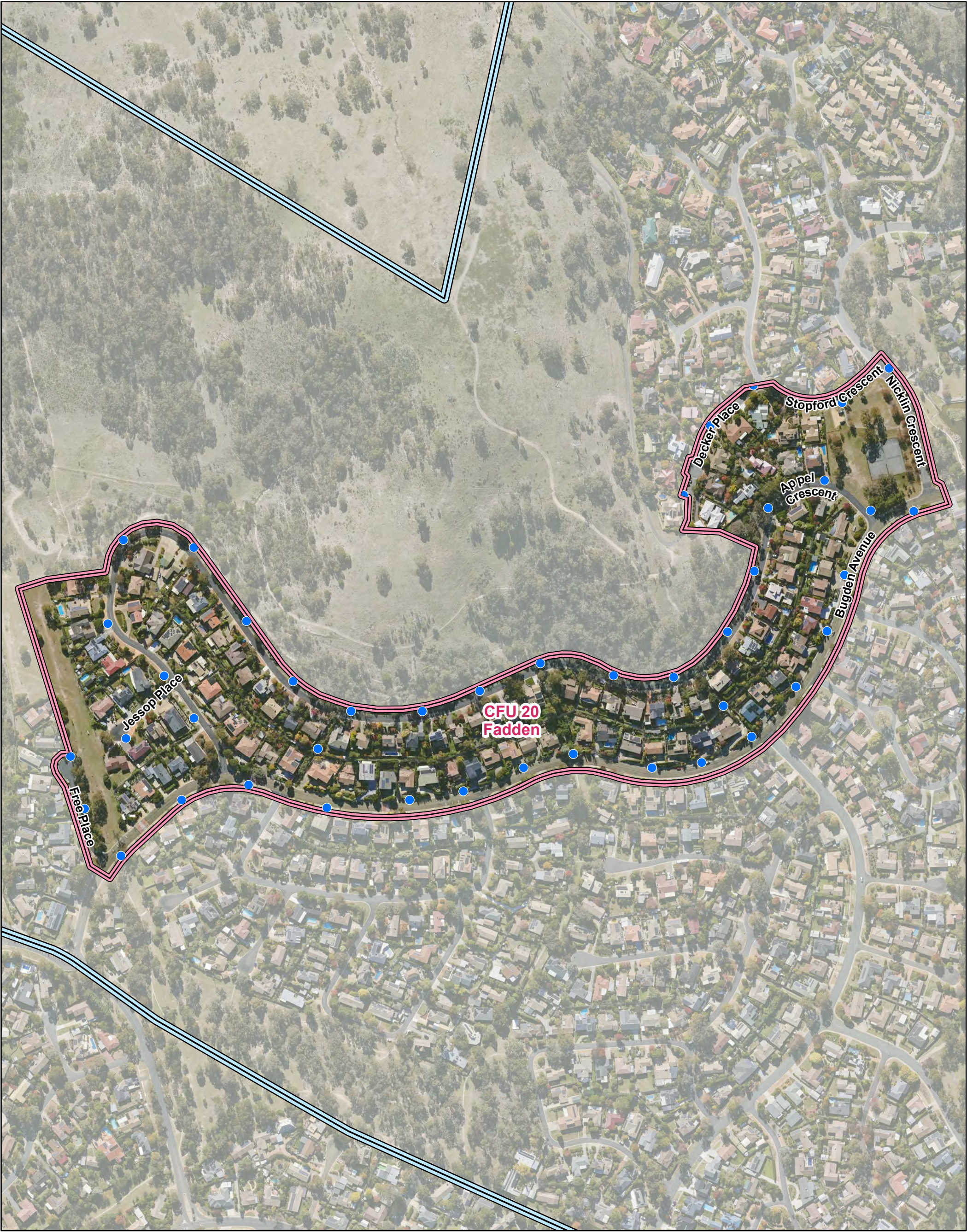
*Australian New Zealand Land Information Council.


Matthew Shonk

Interim Chief Officer
ACT Fire & Rescue

Date: 25 / 06 / 2025

Signed under ACT Emergencies Act 2004
Section 4.2.2, Clause 47



CFU 20 - Fadden

Operational Area

- LEGEND**
- Hydrants
 - ▭ CFU Operational Area
 - ▭ CFU Training and Recruitment Area

SCALE

0 60 120
Metres
1 : 3,500

when printed @ A3

PRODUCTION INFORMATION

Map Produced by ESA Geospatial Intelligence
Map Projection: GDA 1994 MGA Zone 55
Date & Time Printed: 24/06/2025 16:57hrs
Basemap credits: MetroMap

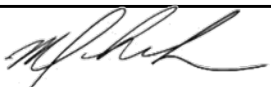
WARNING INFORMATION

Data Supplied by various stakeholders under ANZLIC* Guidelines.

The information contained herein has been provided in good faith. Effort has been made to ensure its accuracy and completeness.

The Stakeholders take no responsibility for errors or omission nor any loss or damage that may result from the use of this information.

*Australian New Zealand Land Information Council.


Matthew Shonk
Interim Chief Officer
ACT Fire & Rescue
Date: 25 / 06 / 2025
Signed under ACT Emergencies Act 2004
Section 4.2.2, Clause 47